



# RESIDENTIAL

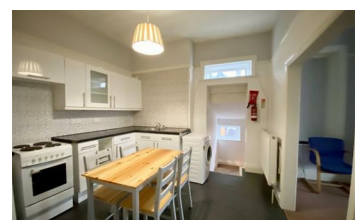
SALES | LETTINGS | PROPERTY MANAGEMENT



## Flat Above 903 Manchester Road, Huddersfield, HD4 £525 Per Month



\*\*\*READY TO VIEW NOW\*\* Occupying this elevated position above the Pharmacy, is this large, well presented two bedroom apartment being furnished. The accommodation ideally suited to a single person or a couple, boasting two double bedrooms. The property is generously proportioned and well appointed through-out, being situated close to an array of local amenities including shops, public transport links and well regarded local schooling. Offering a gas central heated system and double glazed, accommodation comprises of: entrance hallway, stair leading to lobby, spacious lounge, dining kitchen, two double bedrooms and a modern house bathroom with separate w/c. Externally property has no garden and on street parking to Mount Street. Please contact the Agent today to register your interest as viewing be will accompanied.



- FLAT TO RENT
- FURNISHED LET
- DINING KITCHEN
- TWO BEDROOMS
- LOUNGE
- BILLS ARE £150 PPM EXTRA

55 Market Street, Milnsbridge, Huddersfield, HD3 4HZ  
T: 01484 644555 | E: sales@admresidential.co.uk  
www.admresidential.co.uk

